

Specifications

| | |
|---------------------|---|
| Handle number | 4 handles (1 Large, 2 Medium, 1 Small) |
| Handle screen | 5 inch touch screen |
| Vacuum intensity | 0-100kPa adjustable |
| Handle sizes | Large : 220*76*125mm; Medium :160*56*65mm; Small : 125*45*70mm |
| Machine screen | 10.4 inch touch screen |
| Cooling temperature | -15℃~5℃ |
| Cooling system | Water, Air, Semi-conductor triple cooling system |
| Input power | 2500W |
| Output power | 1600W |
| Machine Dimensions | 1230*450*420mm |
| Fuse specifications | Ø5x25 15A |
| Voltage | AC220V±10%,10A;50HZ/ AC110V±10%10A,60HZ |

Ami
AESTHETIC INNOVATION

ZELTRA

Health & Beauty Care System

Fat treatment
& Cryotherapy



Abdomen
Thigh
Chest
Love Handle
Buttock
Upper Back
Arm
Leg

ZELTRA

Health & Beauty Care System

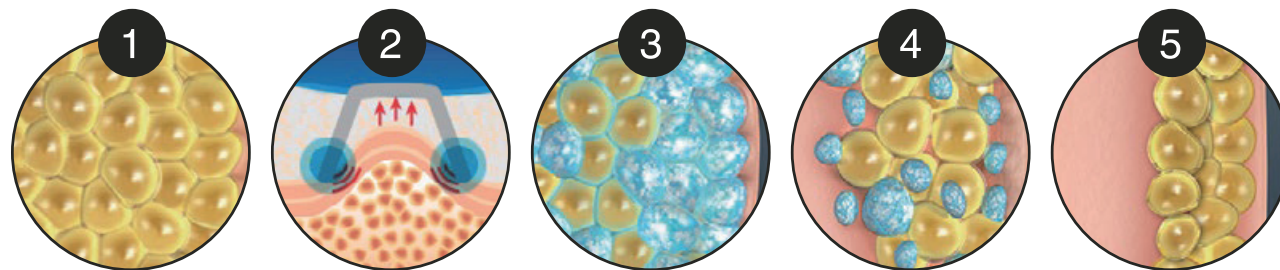
Ami

Address RM. 1412, SJ TECHNO VILLE, 278, BEOTKOT-RO, GEUMCHEON-GU, SEOUL, KOREA
Tel 82-2-3281-9091 Fax 82-2-3281-8011 E-mail amimed@amimed.co.kr

Working principle

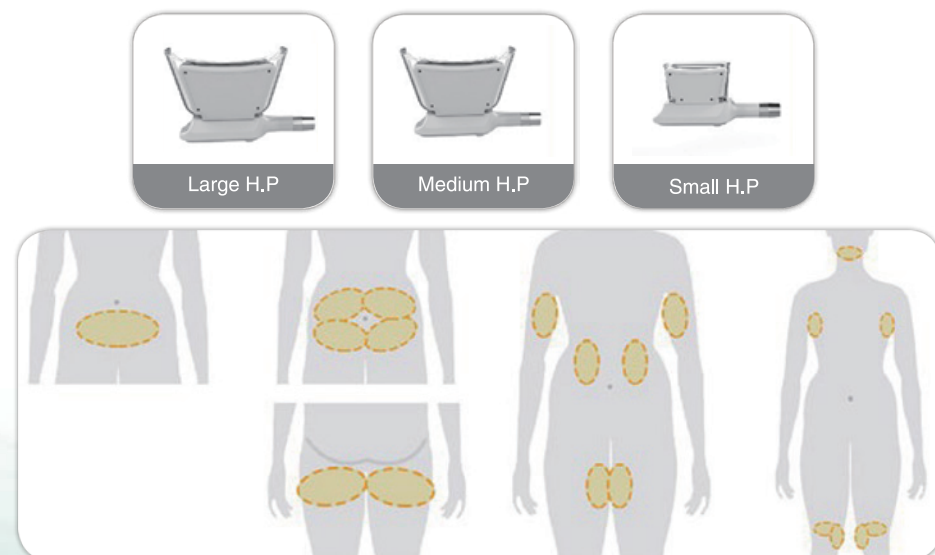
As triglyceride in fats will be converted into solid in particular low temperature, this machine uses precisely controlled cooling energy to the target areas for treatment. It selectively targets at certain fat bulges and eliminate fat cells through a gradual process that does not harm the surrounding tissues and reduce unwanted fat, When fat cells are exposed to precisely control cooling, the triglyceride in fats will be converted into solid, and they will be Crystallization, aging, and then die. The dead fat cells will be out of body by natural metabolism.

Treatment Process

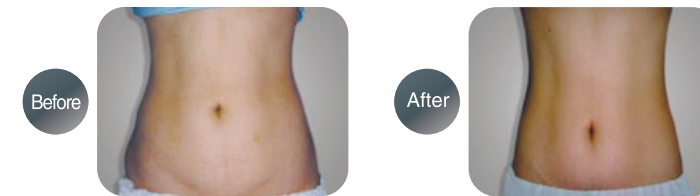


- 01 | Treatment area prior to applying cooling
- 02 | Precisely controlled cooling is applied to the treatment area
- 03 | Underlying fat cells are targeted
- 04 | Fat cells begin a natural removal process that continues for several months
- 05 | The natural removal of fat cells over time results in gradual fat reduction

Dynamic Handpiece



- Four different sizes handpieces optional, easy treatment for whole body.
- Four handpieces working simultaneously, save staff cost, save treatment time.
- Unique double chin treatment handpiece, lead the latest technology in the world.
- Super strong cooling system ensure the minimum treatment temperature reduce to -15→5°C.
- Non-surgery, no risk, easily intelligitize and humanization operation.
- No need recovery, no downtime, come back to work immediately.
- Variety accessories for multi-functional treatment.
- Luxury design.
- Easy operation for all program.



Chin
(option)

Forearm

- Contour PLUS
- Cellulite & fat reduction

Abdomen

- Subcutaneous & Visceral Fat reduction

Hips

- Contour PLUS
- Cellulite & fat reduction

Thigh

- Cellulite & fat reduction

Calf

- Contour PLUS
- Cellulite & fat reduction

