



**Vaginal treatment mode**

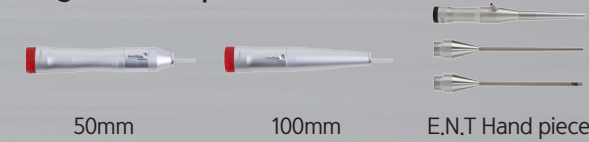


Manual LVR Hand piece

Automatic LVR Hand piece

**Surgical Mode**

Surgical handpiece



50mm

100mm

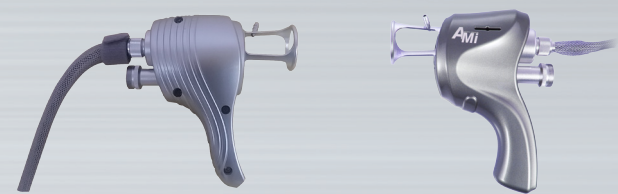
E.N.T Hand piece

**Dental Mode**

Dental Handpiece



**Fractional Mode**



# REX-CO

## Technical Specification

Model	REX-CO
Laser Type	CO2 Laser
Wave length	10600nm
Laser power	1-40W / RF Excited
Function	
Aiming Beam	Diode Laser 650nm (5mw) :1-8 Step
Handpiece Type	50mm, 100mm(Basic) E.N.T & Dental Hand-piece(Optional)
Laser Operation Mode	1. CW 2. Normal Pulse 3. Super Pulse 4. Super Pulse Continuous 5. Ultra Pulse 6. Smart Protocol(General Surgery/Dental Surgery)
Surgical Mode	
Pulse Duration	• Ultra Pulse: 90us-900us • Super Pulse: 1ms-4.5ms • Normal Pulse: 5ms-20ms
Repeat Time	OFF, 2ms/500ms adjustable, 5ms, 10ms, 30ms, 50ms, 70ms, 100ms, 250ms, 500ms
Beam Mode	Ultra Pulse
Density Level	0.2-2.6 Step(x,y line) ; 9dots-4489 dots
Operation Mode	Fractional Mode
Beam Patterns	Array,Spray, Random
Fractional Mode	
Beam Size	2x2mm - 20x20mm
Beam Shape	■ ▲ ◆ ●
Depth Level	1-5 Step
Handpiece	• Fractional Handpiece(Galvanic Motor) • Vaginal Rejuvenation Handpiece(Optional)
Repeat Time	Off, 0.2, 0.5, 0.7, 1.0, 1.5, 2.0 sec
General Features	
Electrical Requirements	220-240VAC, 5A, 50/60Hz
Cooling System	Air Cooling
Dimensions	520(W) x 390(D) x 1700(H)mm
Weight	60Kg
Display	10,2 inches color lcd

CE  
0068

# REX-CO

Fractional handpiece  
+ LVR Handpiece



# REX-CO *Surgical Mode / Dental Mode*

# REX-CO Fractional Mode

**Smart mode for Surgical Field** (General Surgery, Dental Surgery)

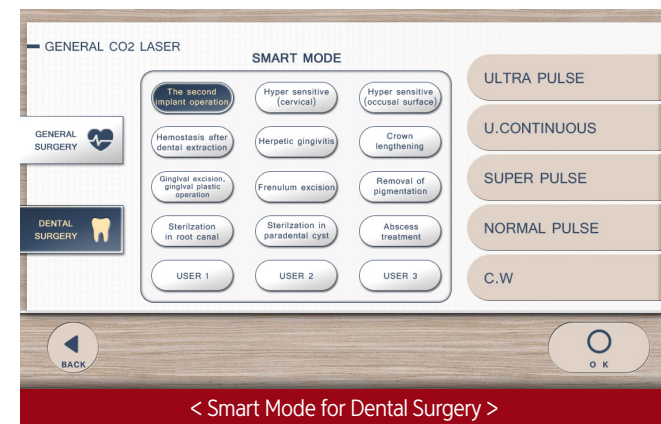
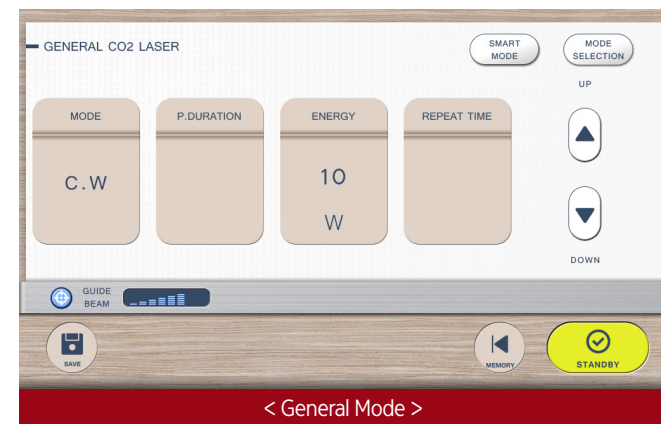


### General Surgery Indication

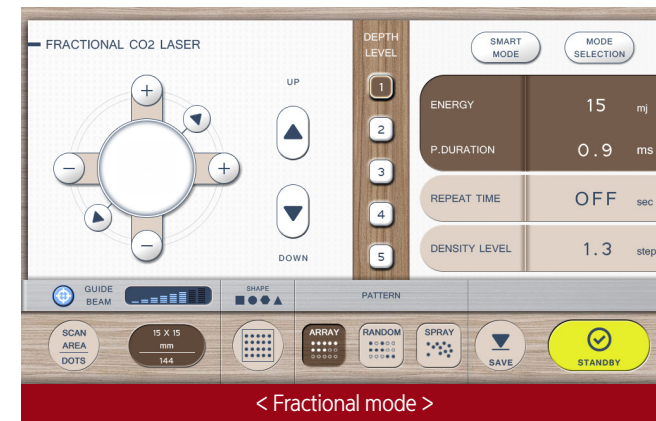
Corns, Warts etc
Birthmarks(mole)
Phimosectomy
Hemorrhoids and anal fistulas
Condyloma
Snoring

### Dental Surgery Indication

The second implant operation	Hyper sensitive
Hemostasis after dental extraction	Herpetic gingivitis
Crown lengthening	Frenulum excision
Gingival excision, Gingival plastic operation	Cleaning of dental cuticle cyst
Removal of pigmentation	Pulp capping -Fluorine coating
Allergic splenitis	Sterilization in paradental cyst
Sterilization in root canal	Abscess treatment



### Fractional Mode



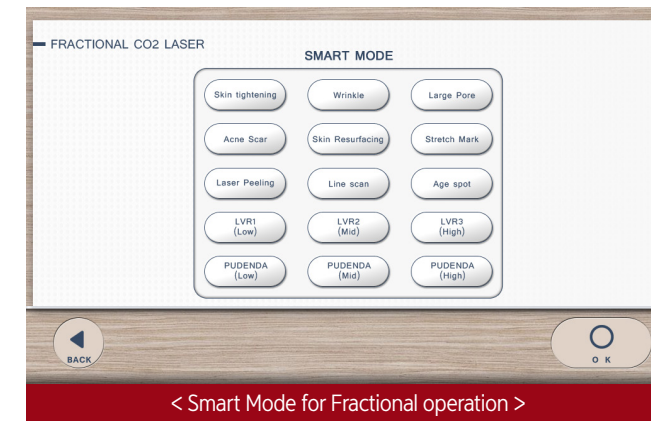
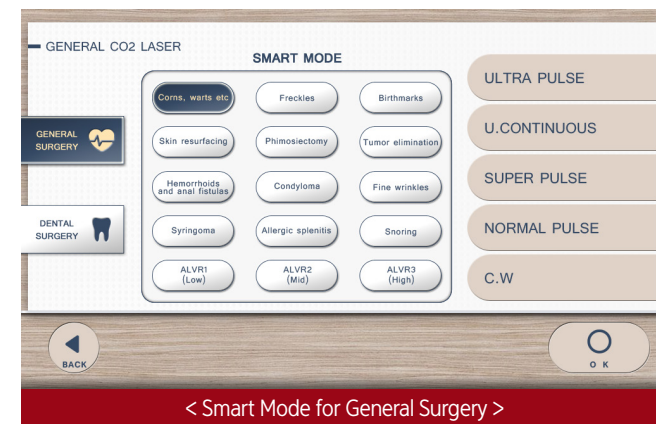
### Various Beam Pattern

■ Various beam pattern for each treatment



### Fractional Surgery indication

Skin tightening	Wrinkle	Large pore	Acne scar
Skin resurfacing	Stretch mark	Laser peeling	Rubbing mode
Pudenda	LVR		



### Ultra Pulse Beam Minimizes Thermal Damage and Side Effect

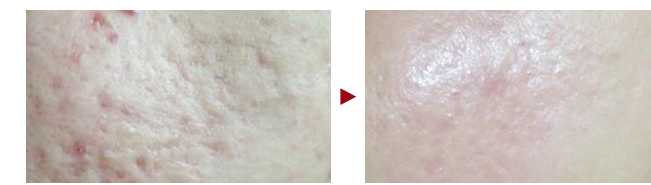
■ Skin Rejuvenation



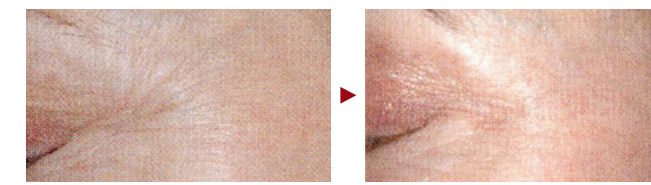
■ Large Pore



■ Acne



■ Wrinkle



< Before & After >



## Fractional handpiece

+ *LVR Handpiece*  
(Vaginal treatment)

Fractional handpiece (for Labium Treatment)



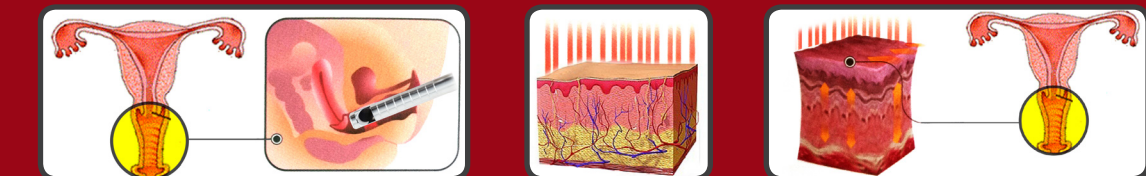
Smart protocol for LVR by Manual Treatment



Fractional handpiece + Auto Vaginal Rejuvenation Handpiece



## How does it work?



high density laser beam delivers to vagina widely and it makes vaginal tightening & rejuvenation.

